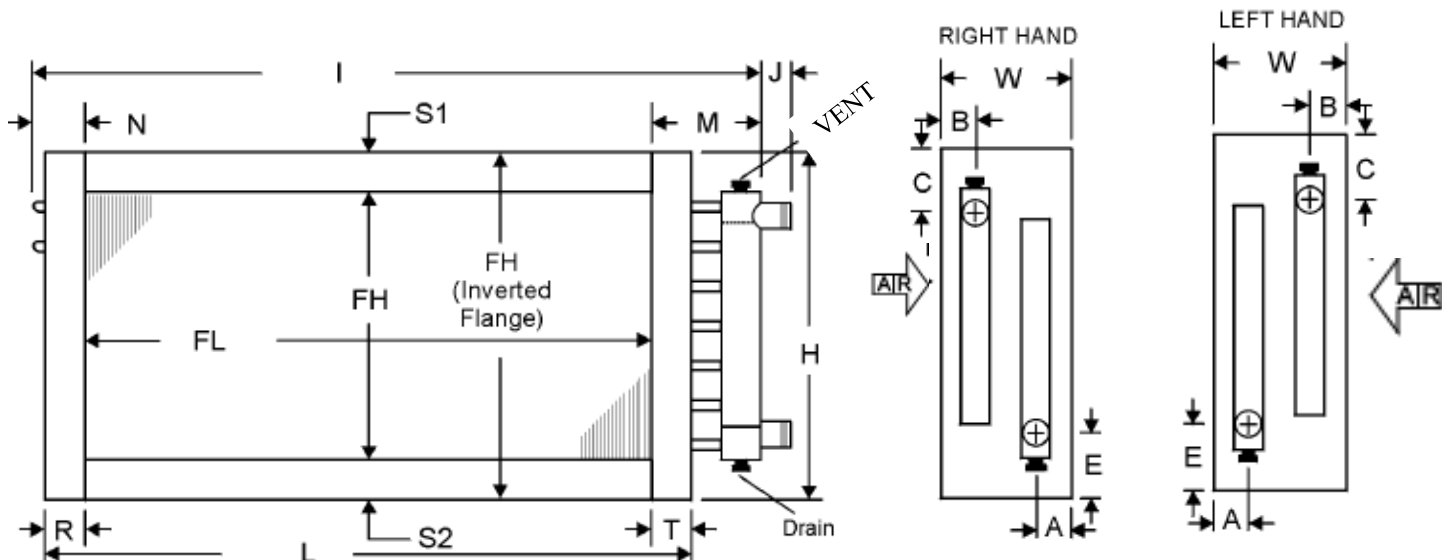




From Name _____
 Company: _____
 Telephone: () _____ - _____
 Cell: () _____ - _____
 Fax: () _____ - _____
 Email: _____
 Job Name _____

Date: _____
 Company: Southern Comfort Coil LLC
 Return Tel: 888-568-4288 Ext. 3
 Return Fax: 727-499-9527
 Email: John@southerncomfortcoil.com



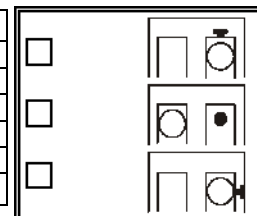
Fill in the Blank and Circle the appropriate selection (ie. 5/8" tube Dia.)											
ITEM #	QTY	Tube Dia.				FPI 4 to 16	ROWS DEEP 1 to 12	FIN Type	FH (IN)	FL (IN)	HAND
		3/8"	1/2"	5/8"	1"			A, B, C, D			

DIMENSIONAL DATA(IN)															
A	B	C	E	F	H	I	J	L	M	N	R	S1	S2	T	W

MATERIALS OF CONSTRUCTION				
FINS	AL	CJ	CS	SSI
TUBES	CU CuNi CS St Stl			
HEADERS	CU	CuNi	Carbon Stl	St Stl
CONN	CS Red Brass Cu Sweat St Stl			
CASING	AL	Galvanized Steel		Stainless Steel
	CU			

GENERAL OPTIONS	
<input type="checkbox"/>	Inverted Flanges
<input type="checkbox"/>	End Plates Only
<input type="checkbox"/>	Label Kit
<input type="checkbox"/>	Mounting Holes
<input type="checkbox"/>	Phenolic Coating
<input type="checkbox"/>	Turbospirals

CONN. & V/D OPTIONS	
<input type="checkbox"/>	End Cap 0.125" Tee
<input type="checkbox"/>	Face 0.50" FPT Cpl.
<input type="checkbox"/>	Face 0.25" Tee
<input type="checkbox"/>	Face 0.50" MPT 7" Ext.
<input type="checkbox"/>	Side 0.50" FPT
<input type="checkbox"/>	FPT Connections



NOTES:

- Determine direction of air flow. Then, standing with your face to the coil and the air hitting you in the back of the head as you face the coil, if the connections are on your right it is a Right Hand Coil (RH). If the connections are on the left it is a Left Hand Coil (LH)**
- See the photos of Fin Types A, B, C and D on instruction page for identification.**

FAX Form to: 727-499-9527